

D-View 6.0 SNMP Network Management System

Versatile Functions

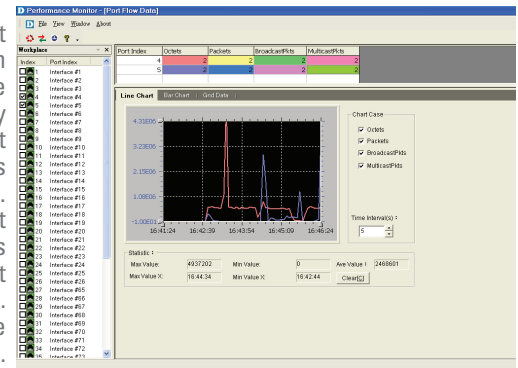
- Auto-generates network topology maps and periodically polls network devices
- Creates detailed network schematics
- Graphically represents real-time status of devices
- Supports client-server architecture (Professional Version only)
- Supports Batch Configuration and is capable of configuring multiple devices at a time
- Central management center for D-Link's E2ES (End-to-End Security) solutions*
- Manages Wireless Switches, Access Points and NetDefend products such as IPS and UTM firewalls*
- Supports multiple, concurrent administrators
- Customizable trap messages for user readability and additional information
- Trap/Alarm notification by e-mail and sound
- MIB Compiler and Browser for easy management of third-party devices under the same platform
- SNMPv3 support for major MIBs
- Database supporting familiar Microsoft SQL Server and Microsoft Access formats
- D-View Modules support HP OpenView Network Node Manager (NNM) (NNM v6.40, NNM v6.41, NNM v7.50, and NNM v7.51)
- Device Panel Simulation



D-View 6.0 SNMP Network Management System is a comprehensive standards-based management tool designed to centrally manage critical network characteristics such as availability, reliability, resilience and security in a consistent way. Flexible and versatile, this software accommodates a wide range of D-Link devices. D-View provides useful tools to allow network administrators to effectively manage device configurations, fault tolerance, performance and security.

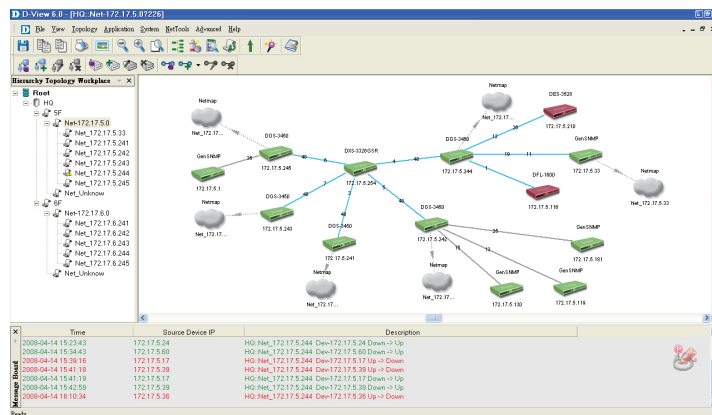
Modular Architecture

D-View 6.0 is organized into a vendor-independent platform and user plug-in modules. The platform consists of several main components, namely the Domain Manager, NetMap Manager, Topology Generator, Batch Configuration, MIB utilities, Net Toolbox and Performance Monitor. The components can be loaded or unloaded according to the users' need. D-View modules are available for D-Link devices that administrators may want to manage. When a device is selected for management, D-View 6.0 will look for that device's module and display its image on the screen. This feature allows for the simulation of the device panel through the use of a graphical user interface.



Topology Map & Network Devices Discovery

Users can create a topology map to graphically represent planned or existing networks to aid network design. D-View 6.0 will also periodically poll network devices to monitor their status. Users can further customize their diagrams with selected icons and bitmap files used for the background. When a topology map is opened, D-View 6.0 will discover the devices connected on the network and display their icons on the map. D-View 6.0 can recognize SNMP enabled devices and also distinguish the device's type. The protocols used in polling for device discovery are SNMP and ICMP. For remote network devices, D-View 6.0 acts as a trap receiver, collects traps sent by the devices and notifies network administrators immediately.



* These features will be supported by plug-in services which will be released in the future

Third-Party Device Management

Users can also manage non-D-Link devices that do not have plug-in modules. D-View 6.0 provides a MIB compiler for users to compile MIB files supplied by the vendors of these devices into a system recognizable format. After compilation, D-View 6.0 loads them into the database. The compiler can communicate with these devices, enabling the administrator to get the values currently stored in the devices or to set new values for specific MIB objects. All MIBs are converted into a graphic tree view, with which the administrator can use the MIB Browser to manage the devices. Non-D-Link devices currently do not have plug-in modules for installation in D-View 6.0.

D-View Modules

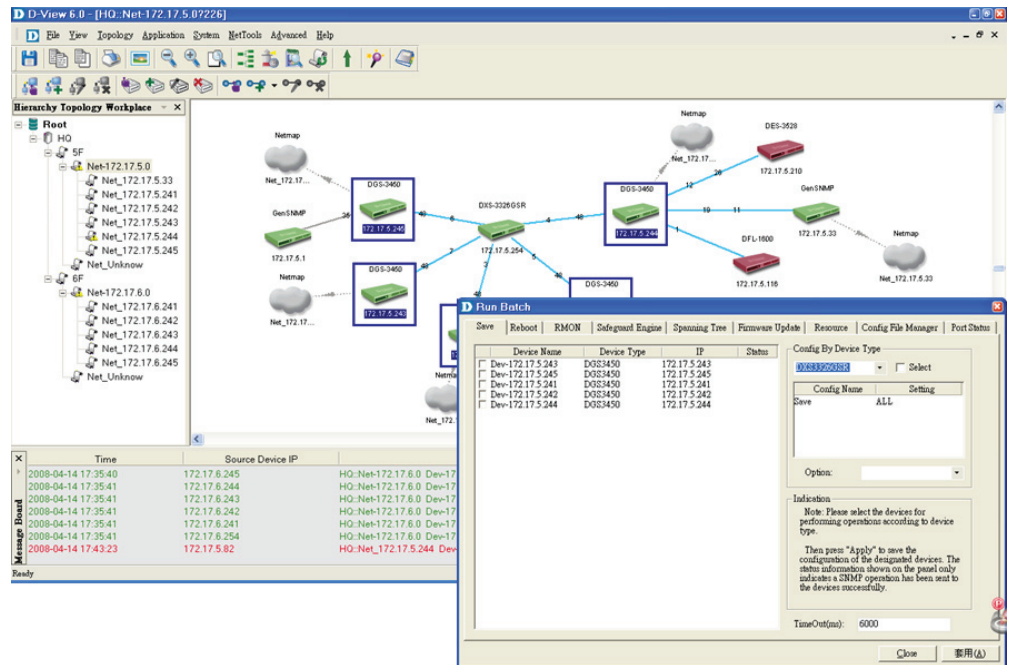
These easy to install modules allow for the future integration of new D-Link switches into D-View 6.0. After adding a D-View Module, the corresponding switch can be managed using D-View 6.0. D-View Modules are also compatible with HP's OpenView Network Node Manager (NNM v6.40, NNM v6.41, NNM v7.50, and NNM v7.51).

Integration with D-Link's End-to-End Security (E2ES) Solutions*

D-Link has innovated comprehensive security solutions aimed to provide end-to-end threat containment and security protection solutions. It consists of three major components, namely the Gateway Security, the End-point Security and Joint Security. D-View 6.0 seamlessly integrates these security components scattered among different solutions into a single platform to provide users with a unified interface to manage D-Link network devices.

Traps & Configurations

D-View 6.0's Trap Editor provides the user with the capability to edit trap descriptions, import third parties' trap definitions and configure trap notifications via mail and sound. D-View 6.0 also provides simultaneous backup configurations, batch configurations and the capability to enable specific functions for LAN switches.



The screens represent D-View 6.0's Batch Configuration feature and its ability to configure multiple devices at a time.

* These features will be supported by plug-in services which will be released in the future.

TECHNICAL SPECIFICATIONS

MIB Utilities

- Device SNMP Configuration
- MIB II Information and Statistics
- IF Information Tables
- Spanning Tree Information and Port Configuration
- Bridge 802.1d Information and Port Configuration
- RMON Statistics, History and Event Group
- Transparent Bridge Forwarding, Static Filter Tables and Port Counter
- 802.1p Priority Configuration
- MIB Browser
- MIB Compiler

System Management Tools

- Device Panel Simulation Module
- Batch Program
- Link Capacity Check
- Safeguard Check
- Get All ARP Information
- Device Type Check
- Topology Generator
- Topology Import / Export
- Hierarchical Topology Manager
- Device Type Extension
- Web Configuration
- Telnet Configuration
- TFTP File Transport
- Traceroute
- MAC Locator
- Ping
- D-View Modules
 - Device Panel Simulation
 - Support HP OpenView Network Node Manager (NNM)
(NNM v6.40, NNM v6.41, NNM v7.50, and NNM v7.51)

Fault Management Tools

- Trap Filter
- Trap Log
- Ping Poll Filter
- Ping Poll Log
- SNMP Poll Filter
- SNMP Poll Log
- Event Config Manager
- Event Viewer

Performance Management Tools

- Performance Monitor (switch has to support RFC1213 and RMON)

Security Management Functions

- SNMP v3 covering security functions such as packet encryption/decryption, user levels for different classes of access right, MPD (RFC 2572), TARGET (RFC 2573), USM (RFC 2574) and VACM (RFC 2575)
- SNMP v3 Configuration
- Device Module Access Right Control
- NMS System Access Control
- NMS System Function Module Access Right Control
- Local and Radius Authentication Modes when Login

Resource Management Functions

- Device Resource Manager
- User Locator
- Device Locator
- User Statistics
- Device Statistics
- Device System Information Manager (RFC 1213 System)
- Device Port Status Manager

Supported Devices

- D-Link Devices
 - Managed switches
 - OLT/ONU devices
 - Wireless bridges and access points
 - Remote routers
 - Multi-tenant broadband CO devices

D-View 6.0 Standard Edition

Hardware Requirements

- CPU: 1.4GHz or above
- DRAM: 1G or above
- Hard Drive Space: 200MB
- Ethernet Adapter

Software Requirements

- Microsoft Internet Explorer 6 with Service Pack 1 or later
- Microsoft XML Parser and SDK

Operating System	Service Pack Version
Microsoft Windows 2000 Server (English Version)	Service Pack 4
Microsoft Windows 2000 Advanced Server (English Version)	Service Pack 4
Microsoft Windows Server 2003 (English Version)	Service Pack 2
Microsoft Windows XP/Home/Professional	Service Pack 2

D-View 6.0 Professional Edition

Hardware Requirements

- CPU: 1.4GHz or above
- DRAM: 1G or above
- Hard Drive Space: 200MB
- Ethernet Adapter

Software Requirements

- Microsoft Internet Explorer 6 with Service Pack 1 or above
- Microsoft XML Parser and SDK

Operating System	Service Pack Version
Microsoft Windows 2000 Server (English Version)	Service Pack 4
Microsoft Windows 2000 Advanced Server (English Version)	Service Pack 4
Microsoft Windows Server 2003 (English Version)	Service Pack 2

- Database Management System

Database Management System	Service Pack Version
Microsoft SQL Server 2000 English version	Service Pack 2
Microsoft SQL Server 2005 English version	N/A

*D-Link Corporation
No. 289 Xinhua 3rd Road, Neihu, Taipei 114, Taiwan
Specifications are subject to change without notice.
D-Link is a registered trademark of D-Link Corporation and its overseas subsidiaries.
All other trademarks belong to their respective owners.
©2009 D-Link Corporation. All rights reserved.
Release 06 (August 2009)*